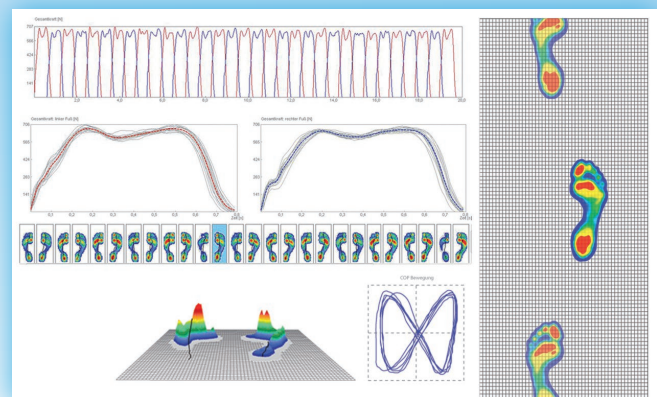
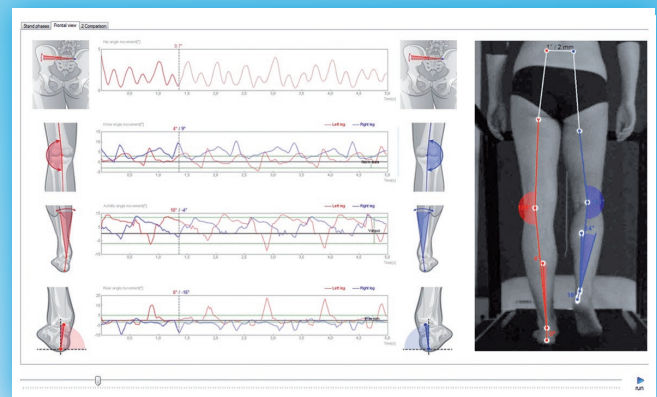
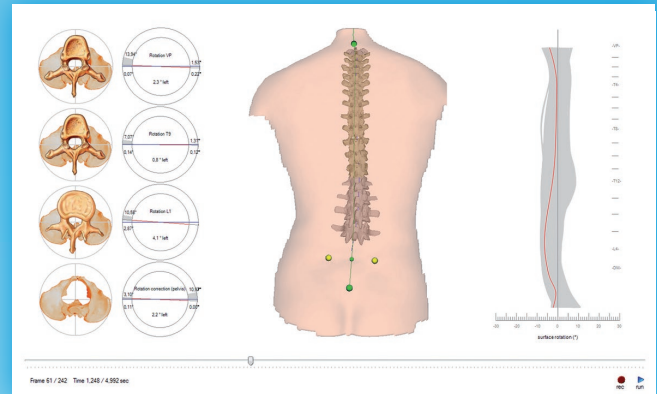


DIERS 4D motion® Lab

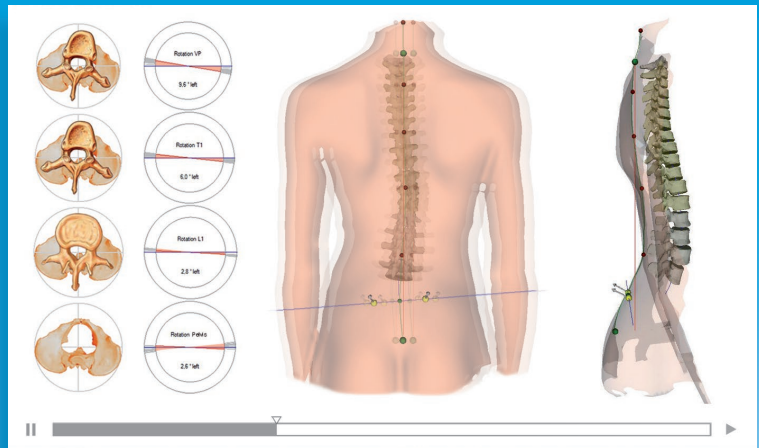
The Compact Solution for Motion Analysis



3in1...



Step into a new dimension ...



European Patent No.: EP 1718206
United States Patent No.: US 7,899,220 B2

DIERS 4D motion® *Dynamic Spine & Posture Analysis*

The **DIERS 4D motion®** system is the leading technology in the field of 3D spine and surface topography. For the first time it is possible to visualize the complex motion pattern of the spine and pelvis while walking and to monitor the results. This technological breakthrough is based on the innovative software and an advanced camera system (60 frames/second).

Clinical Applications:

- **Postural Deficits:** Scoliosis, hyper/hypo kyphosis, hyper/hypo lordosis, blockades, pelvic obliquities, leg length discrepancies, ...
- **Motion Asymmetries**
- **Foot & Gait Deficits (4D motion® Lab)**
Customized orthopaedic and proprioceptive insoles
- **Medical based Training Therapy**
- **Follow-up Measurements:** Scoliosis, pre- & post surgery, posture correcting insoles etc.
- **Physiotherapy / Rehabilitation**
- **Sports Medicine & Professional Clinical Diagnostics**
- **and many more**

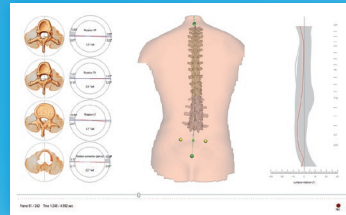


The Compact Solution for Motion Analysis

Components:

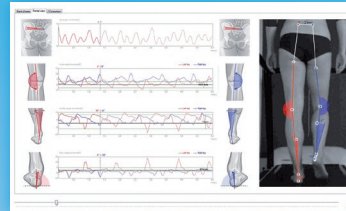
DIERS 4D motion®

Dynamic measurement of the spine, vertebra and pelvis



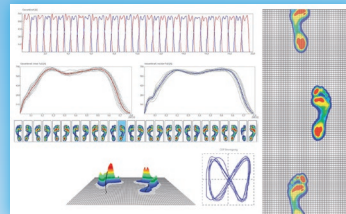
DIERS leg axis

Video gait analysis for the detection and measurement of leg axis



DIERS pedogait

Treadmill with integrated pressure plate



DIERS leg axis lateral (optional)



DIERS 4D motion® Lab

Dynamic analysis of the whole musculoskeletal system with small space requirement (8m²)

The **DIERS 4D motion®** system for dynamic spine measurement is the key technology for the development of the **DIERS 4D motion® Lab**.

This motion laboratory allows a synchronized measurement of the whole skeletal system and opens new fields of clinical applications: ranging from medical diagnosis via training therapy to sport sciences.

The dynamic spine analysis is a key measurement modality in clinical diagnostics, research and further studies.

4 m | 13 ft.

SERVICE

is a priority for us.

- ✓ Service & support by competent professionals (Engineers, sports-, computer scientists, i.a.)
- ✓ Technical planning assistance
- ✓ Professional installation with flexible scheduling
- ✓ Intensive product instruction by specialists
- ✓ Advanced training courses for medical assistants
- ✓ Annual user meetings to promote an intensive exchange of experience
- ✓ Immediate assistance via remote maintenance
- ✓ Regular maintenance of the systems according to the Medical Device Directive (MDD)



HEADQUARTER:

DIERS International GmbH

Dillenbergweg 4 | 65388 Schlangenbad, Germany
Phone +49 (0) 6129 48 86 0 | Fax +49 (0) 6129 48 86 50
info@diers.de | www.diers.de

Presented by:

USA:

DIERS Medical Systems, Inc.
1752 Capital Street, Suite 310
Elgin, Illinois 60124 / USA
Phone: +1 312 419-0205
Fax: +1 312 277-3416
info@diersmedical.com
www.diersmedical.com

INDIA:

DIERS Biomedical Solutions, Pvt. Ltd.
Office B-154, North-ex Mall, Sector 9,
Rohini, New Delhi-110085, India
Phone: +91 11 27 56 54 38
info@diers.in | www.diers.in

RUSSIA:

DIERS Medical Co. Ltd.
Vyborgskaya nab. 61, Office 214
197342 Saint-Petersburg
Russian Federation
Phone: +7 812 924 61 75
info@diers.ru | www.diers.ru

MIDDLE EAST:

DIERS Middle East (ME) Est
Room 14 | King Faisal High Way
Khobar 31952 | Kingdom of Saudi Arabia
Phone: +966 567 047 034
info@diers-me.com